

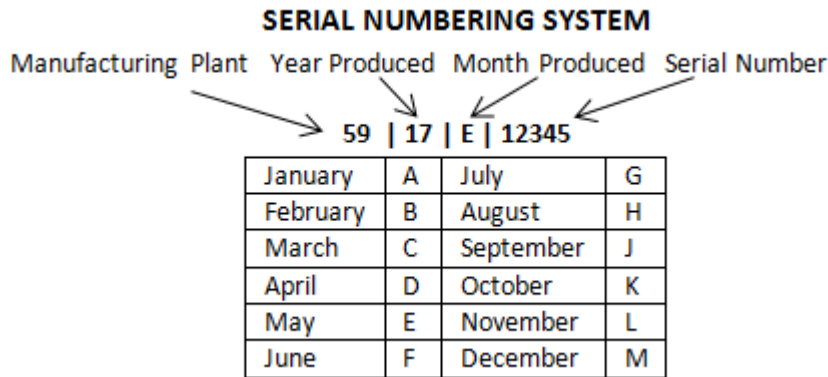
Construction Heat for All 90% + Gas Furnaces in Canada

The Heating Refrigeration Air Conditioning Institute (HRAI), our industry trade association in Canada, announced an agreement between furnace manufacturers to include a statement regarding the use of new gas furnaces as “construction heat” during the construction of a dwelling. The purpose of the statement is to ensure consumers have a fully functioning new furnace when they purchase a new home and not a furnace that has either been used extensively or has reduced performance due to heavy use during construction.

The following statement will be included in all manufacturer installation instructions for all furnaces sold in Canada.

Gas furnaces manufactured on or after May 1, 2017 are not permitted to be used in Canada for heating of buildings or structures under construction.

With an effectivity date of May 1, 2017, this will be a running change in our manufacturing facilities and this not will be included in all installation instructions for all Allied Air (Armstrong Air, AirEase, Concord, Ducane) 90%+ gas furnaces. As this will be a running change, there is the possibility of receiving an Allied Air 90%+ installation instruction built after May 1, 2017, without the new HRAI verbiage. This note only applies to units installed in Canada and manufactured after May 1, 2017. Allied Air serial numbers may be read as follows:



HRAI and Technical Standards and Safety Authority (TSSA) of Ontario have defined the following:

“Once the drywall has been installed and primed, it would be appropriate to put a procedure in place to activate the furnace, but only if some additional conditions were met, most importantly in the installation of a MERV 11 filter at the return on the furnace. A sign-off form for activation of the furnace is now being developed in partnership with gas utilities, HVAC contractors and homebuilders.”

If you have any questions regarding this statement, please contact Allied Technical Service at 800-515-3501.

FOR DEALER DISTRIBUTION